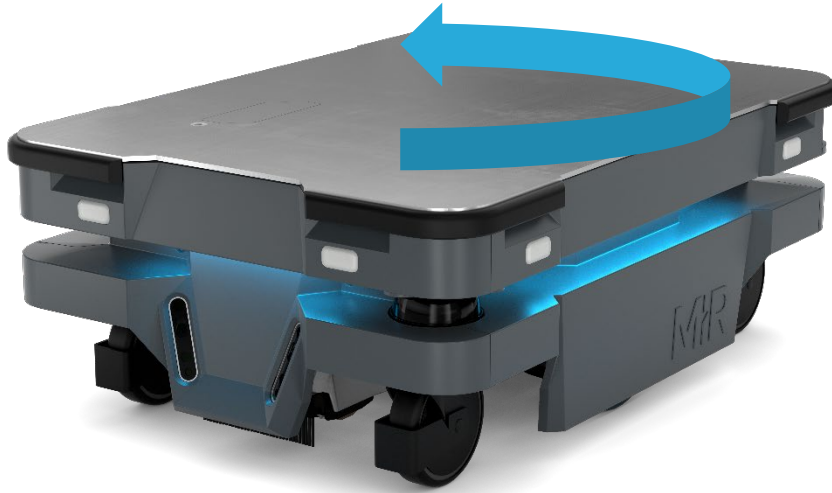


## Polar Inertia Performance of MIR250



**Scope:**

- Assess polar inertia capabilities of the MIR250 robot that can be shared with integrators, so this can be considered in the design of top modules and load.

**What will be available:**

- Open seats at R&D Office in Odense SV.
- 1 x MIR250 Robot.
- Support from mechanical engineering team.
- Support regarding obtaining alternative compounds from supplier.

**What is expected:**

Report including:

- Define polar inertia capabilities of the MIR250 robot.
- Develop test method that could be used widely by MIR.
- Validate test method.
- Validate performance values against field cases.

Physical setup for future use of other robots.