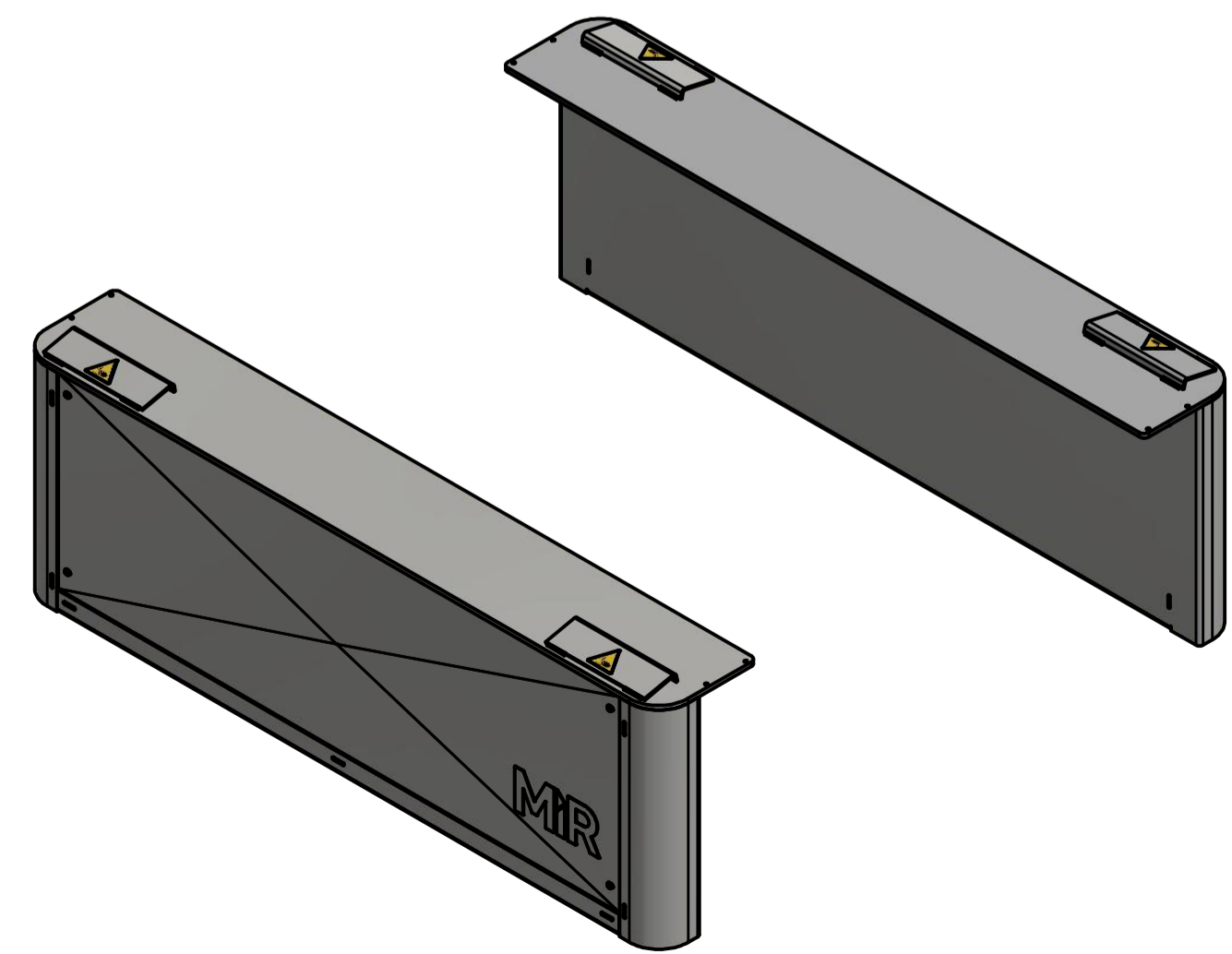
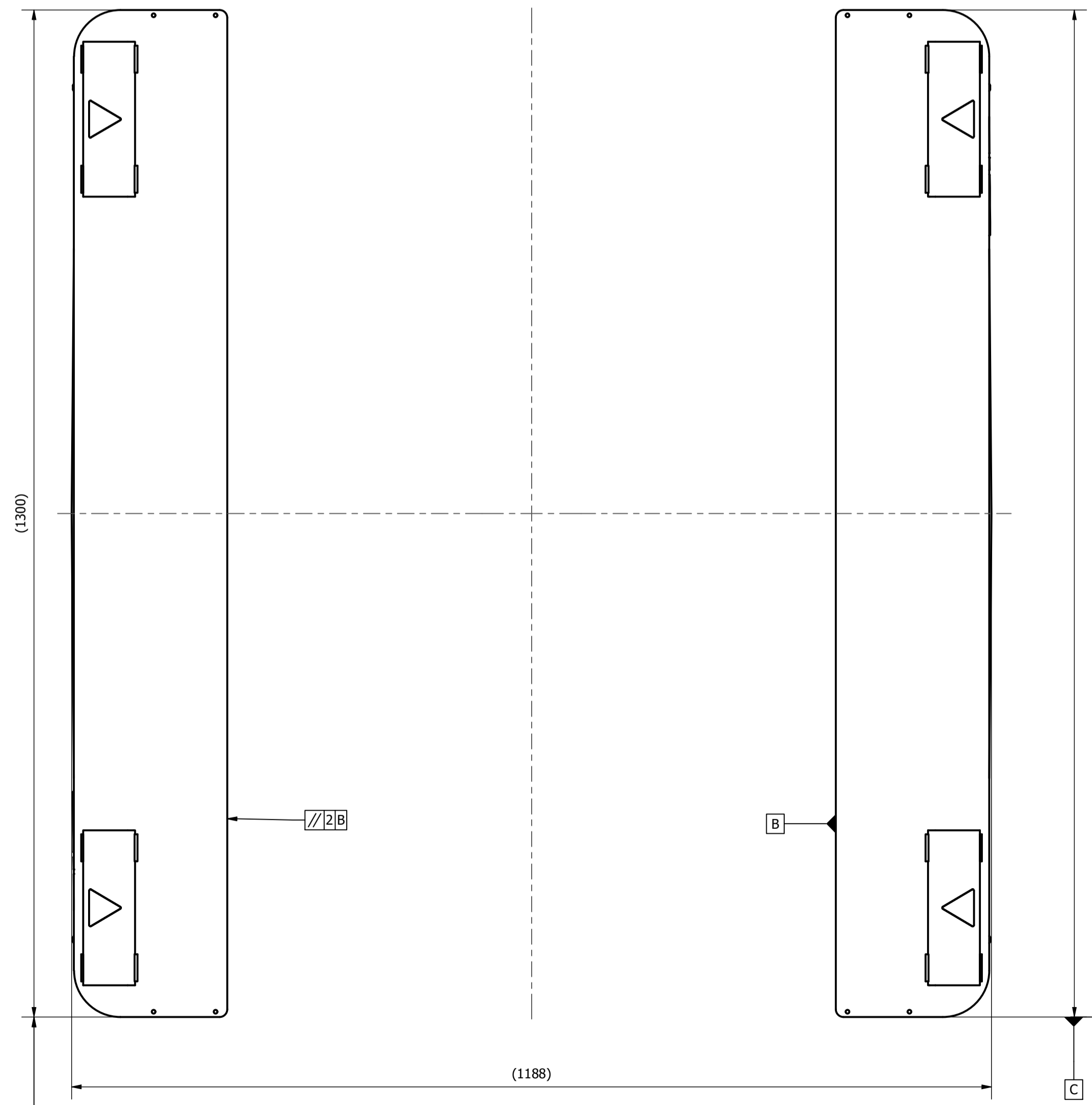
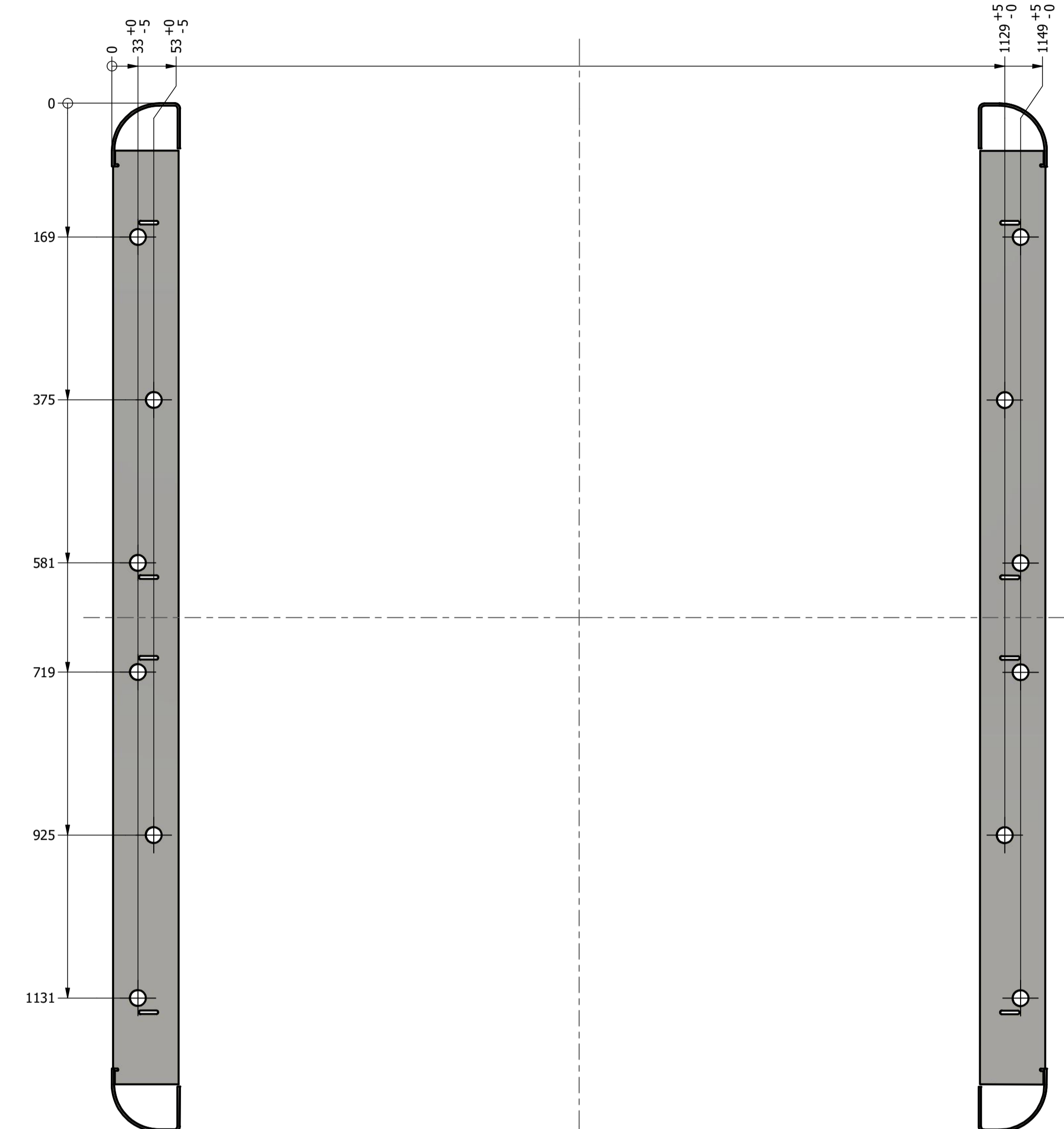
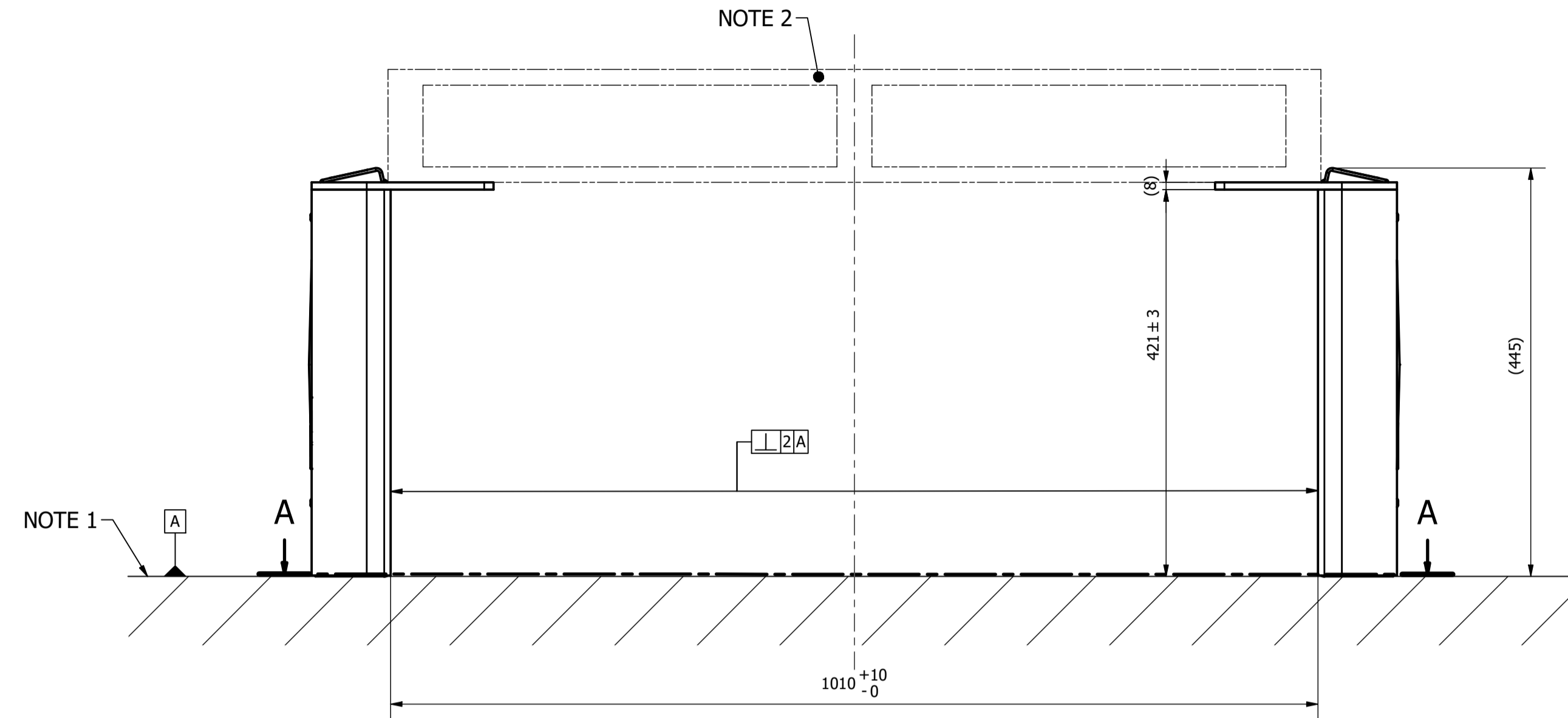


MiR PALLET RACK INSTALLATION

A-A FLOOR HOLE LAYOUT

HOLE TOLERANCE ± 3 UNLESS OTHERWISE INDICATED
NOTE 3



NOTES

NOTE 1.
INSTALL INDOOR ON LEVELED SURFACE.
E. G. CONCRETE FLOOR

NOTE 2.
MAXIMUM PAYLOAD 1000KG.
MAXIMUM PALLET DEFLECTION
ALLOWED 8MM.

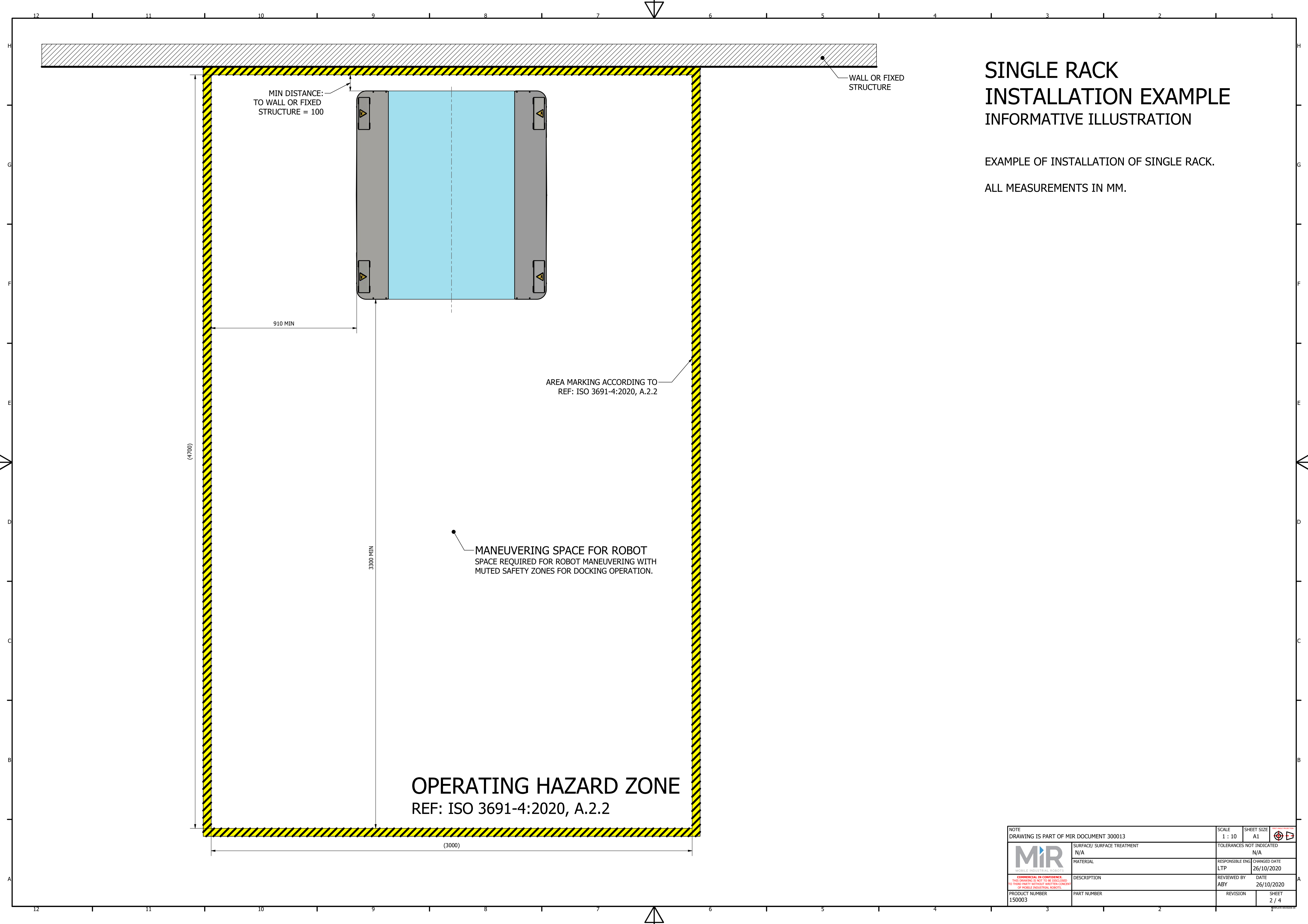
NOTE 3.
HOLE TOLERANCE IS FOR GUIDANCE
INSTALLATION TOLERANCE IS APPLICABLE
SCREWS TO MATCH FLOOR
E.G. CONCRETE FLOOR
M12 WEDGE ANCHOR
MIN 8KN TENSION REQUIRED

GENERAL NOTE
ALL MEASUREMENTS IN MM.

NOTE DRAWING IS PART OF MiR DOCUMENT 300013		SCALE 1 : 5	SHEET SIZE A1	TOLERANCES NOT INDICATED N/A
SURFACE/ SURFACE TREATMENT N/A		RESPONSIBLE ENG LTP		
MATERIAL		CHANGED DATE 26/10/2020		
DESCRIPTION		REVIEWED BY ABY		
DATE		DATE 26/10/2020		
PRODUCT NUMBER 150003	PART NUMBER	REVISION	SHEET 1 / 4	

SINGLE RACK INSTALLATION EXAMPLE INFORMATIVE ILLUSTRATION

EXAMPLE OF INSTALLATION OF SINGLE RACK.
ALL MEASUREMENTS IN MM.




OPERATING HAZARD ZONE
REF: ISO 3691-4:2020, A.2.2

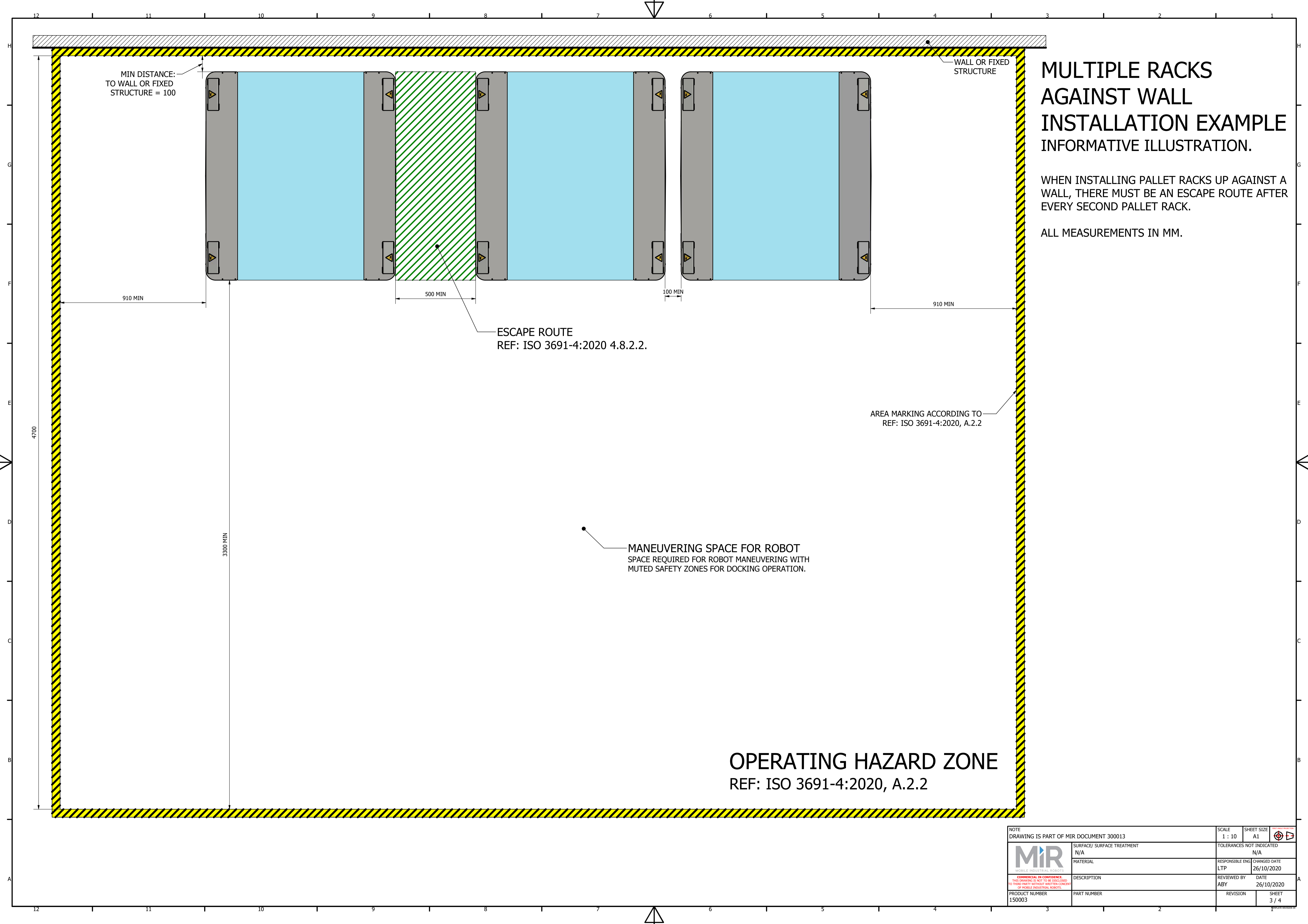
MANEUVERING SPACE FOR ROBOT
SPACE REQUIRED FOR ROBOT MANEUVERING WITH
MUTED SAFETY ZONES FOR DOCKING OPERATION.

AREA MARKING ACCORDING TO
REF: ISO 3691-4:2020, A.2.2

MIN DISTANCE:
TO WALL OR FIXED
STRUCTURE = 100

WALL OR FIXED
STRUCTURE

NOTE DRAWING IS PART OF MIR DOCUMENT 300013		SCALE 1 : 10	SHEET SIZE A1	TOLERANCES NOT INDICATED N/A
 <small>MOBILE INDUSTRIAL ROBOTS</small>		SURFACE/ SURFACE TREATMENT N/A		RESPONSIBLE ENG LTP
<small>COMMERCIAL IN CONFIDENCE THIS DRAWING IS NOT TO BE DISCLOSED TO THIRD PARTY WITHOUT WRITTEN CONSENT OF MOBILE INDUSTRIAL ROBOTS.</small>		MATERIAL		CHANGED DATE 26/10/2020
PRODUCT NUMBER 150003		DESCRIPTION		REVIEWED BY ABY
PART NUMBER		REVISION		DATE 26/10/2020
SHEET		2 / 4		



MULTIPLE RACKS AGAINST WALL INSTALLATION EXAMPLE INFORMATIVE ILLUSTRATION.

WHEN INSTALLING PALLET RACKS UP AGAINST A WALL, THERE MUST BE AN ESCAPE ROUTE AFTER EVERY SECOND PALLET RACK.

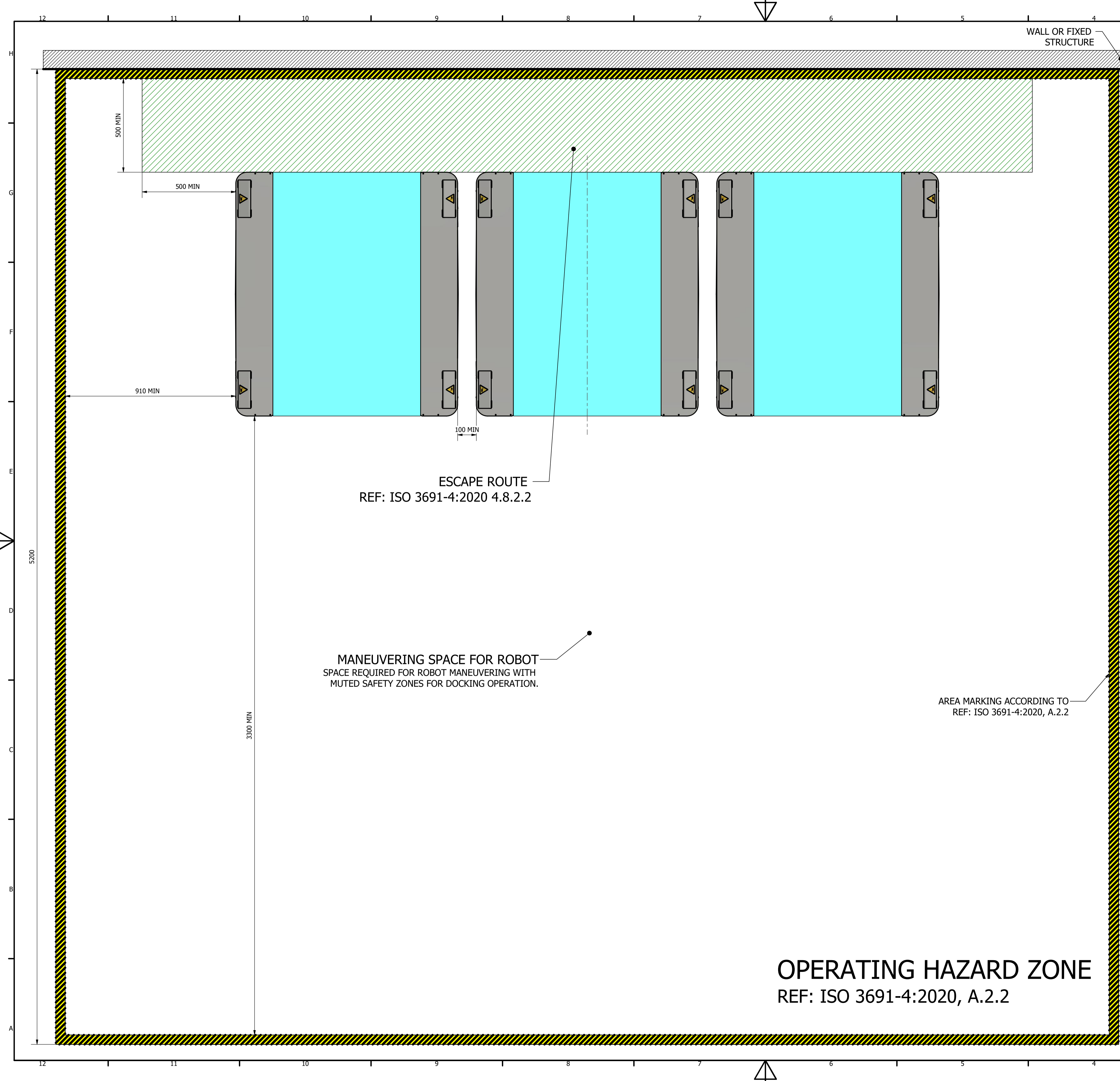
ALL MEASUREMENTS IN MM.

OPERATING HAZARD ZONE
REF: ISO 3691-4:2020, A.2.2

NOTE DRAWING IS PART OF MIR DOCUMENT 300013		SCALE 1 : 10	SHEET SIZE A1	
SURFACE/ SURFACE TREATMENT N/A		TOLERANCES NOT INDICATED N/A		
MATERIAL		RESPONSIBLE ENG LTP	CHANGED DATE 26/10/2020	
DESCRIPTION		REVIEWED BY ABY	DATE 26/10/2020	
PRODUCT NUMBER 150003	PART NUMBER	REVISION	SHEET 3 / 4	



COMMERCIAL IN CONFIDENCE
THIS DRAWING IS NOT TO BE DISCLOSED
TO THIRD PARTY WITHOUT WRITTEN CONSENT
OF MOBILE INDUSTRIAL ROBOTS.



WALL OR FIXED STRUCTURE

MULTIPLE RACKS CLOSE INSTALLATION EXAMPLE INFORMATIVE ILLUSTRATION.

IF A NUMBER OF PALLET RACKS ARE MOUNTED CLOSE TO EACH OTHER AN ESCAPE ROUTE MUST BE AVAILABLE ON THE BACKSIDE OF THE RACKS.

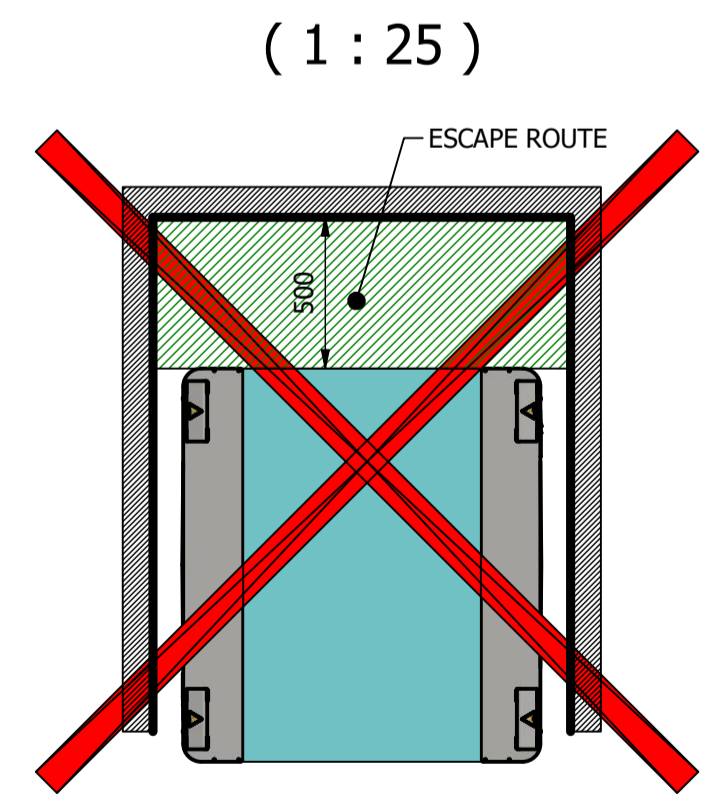
ALL MEASUREMENTS IN MM.

ESCAPE ROUTE
REF: ISO 3691-4:2020 4.8.2.2

MANEUVERING SPACE FOR ROBOT
SPACE REQUIRED FOR ROBOT MANEUVERING WITH MUTED SAFETY ZONES FOR DOCKING OPERATION.

AREA MARKING ACCORDING TO
REF: ISO 3691-4:2020, A.2.2

OPERATING HAZARD ZONE
REF: ISO 3691-4:2020, A.2.2



ESCAPE ROUTES MUST HAVE FREE ACCESS.
DO NOT PLACE RACKS IN ENCLOSED AREAS.

NOTE DRAWING IS PART OF MIR DOCUMENT 300013		SCALE 1 : 10	SHEET SIZE A1	
SURFACE/ SURFACE TREATMENT N/A		TOLERANCES NOT INDICATED N/A		
MATERIAL		RESPONSIBLE ENG LTP	CHANGED DATE 26/10/2020	COMMERCIAL IN CONFIDENCE THIS DRAWING IS NOT TO BE DISCLOSED TO THIRD PARTY WITHOUT WRITTEN CONSENT OF MOBILE INDUSTRIAL ROBOTS.
DESCRIPTION		REVIEWED BY ABY	DATE 26/10/2020	
PRODUCT NUMBER 150003	PART NUMBER	REVISION	SHEET 4 / 4	