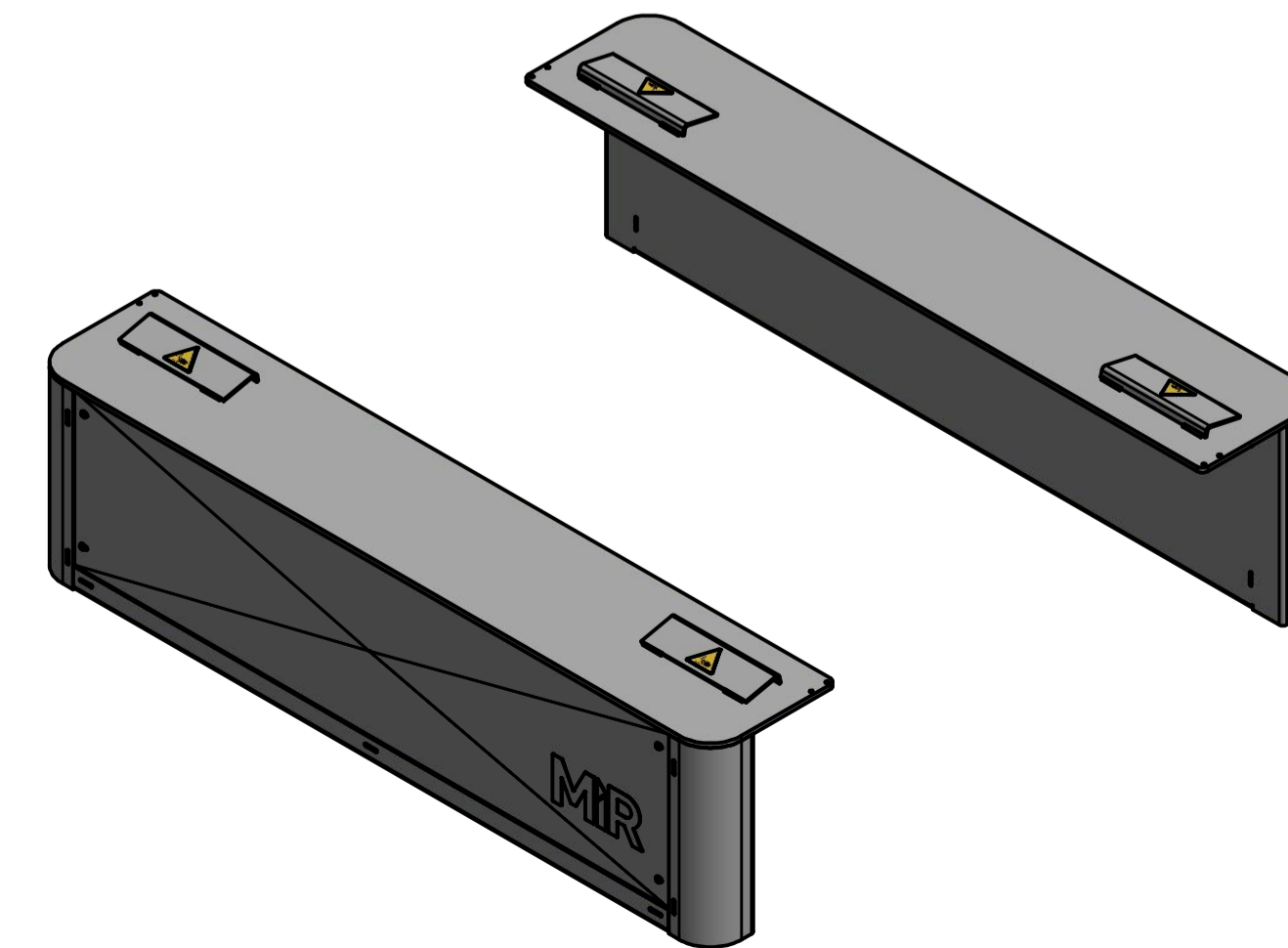
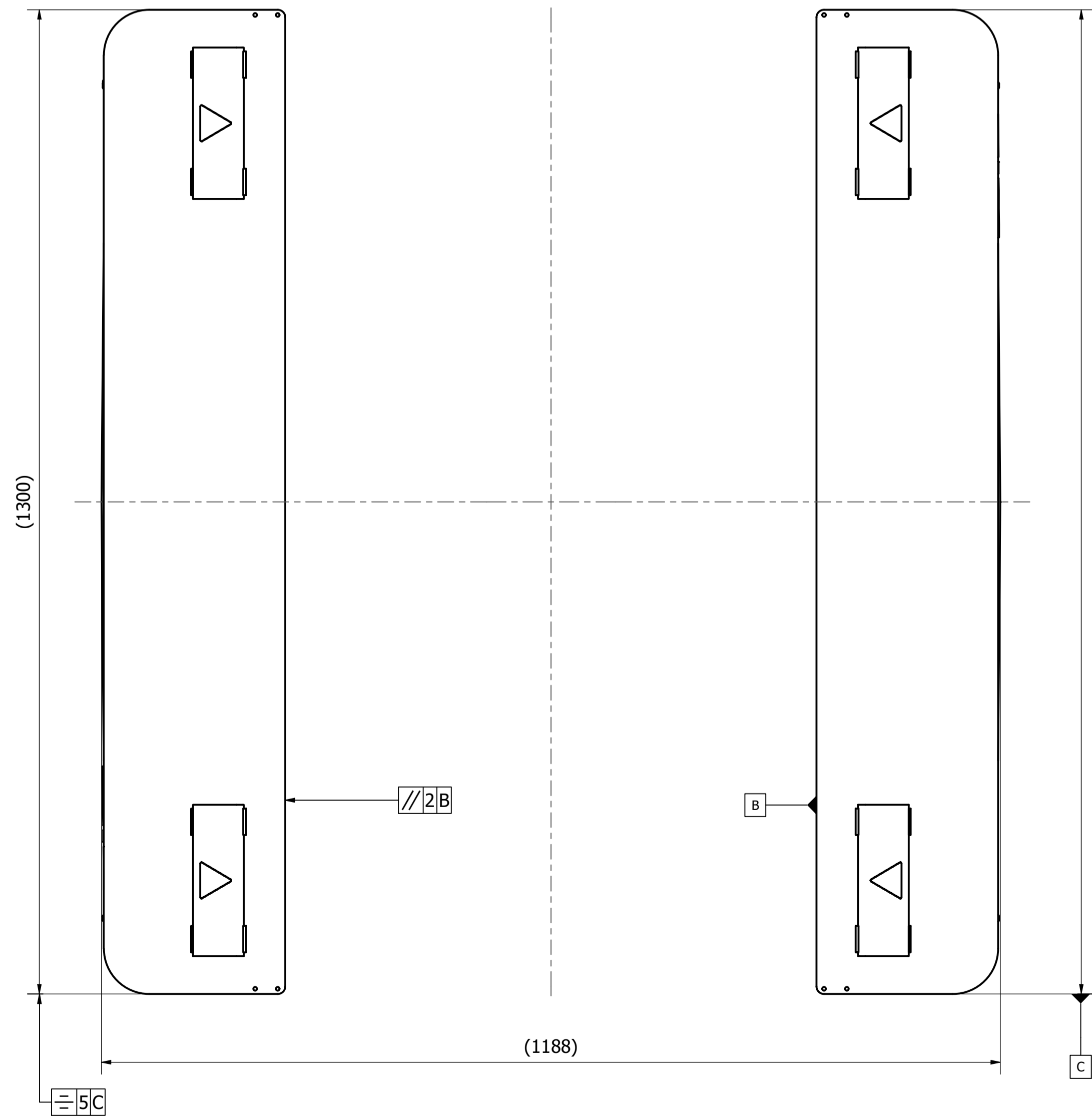
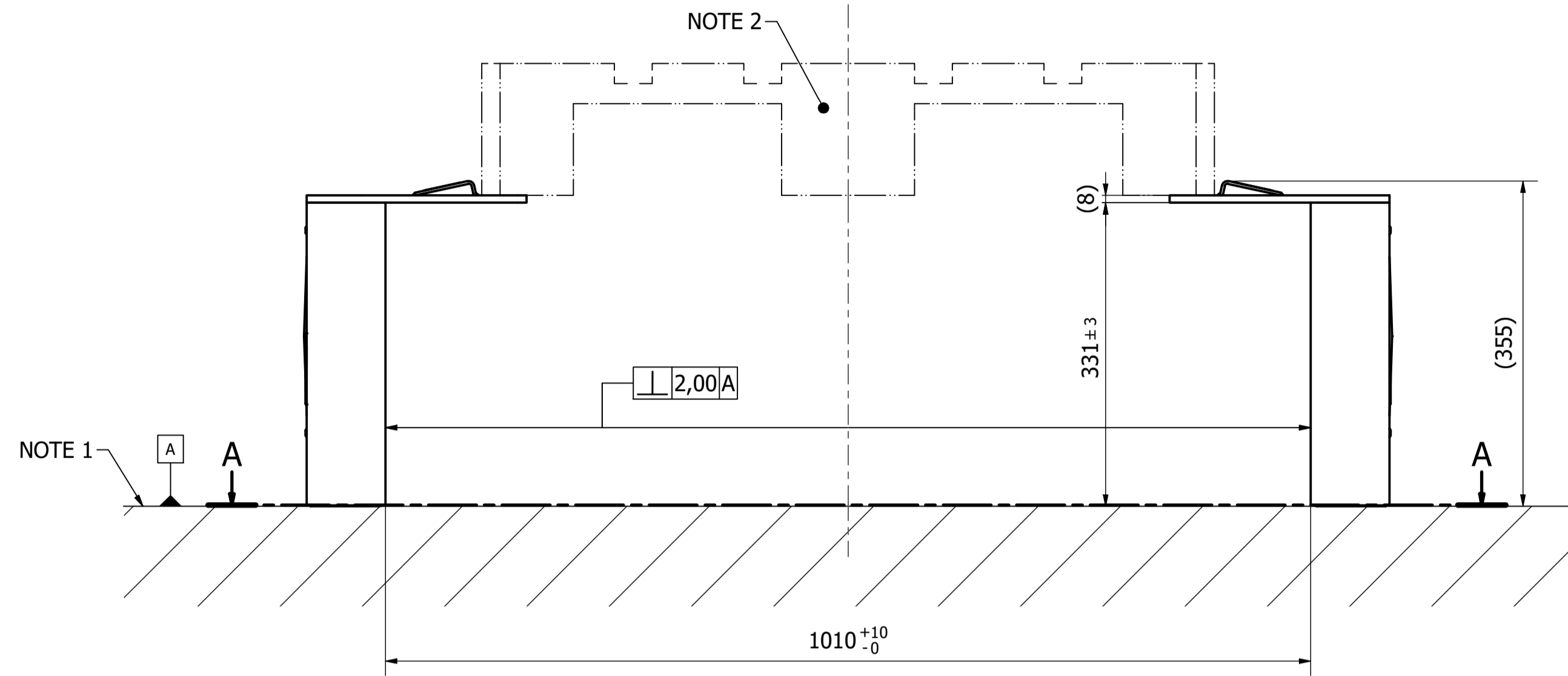
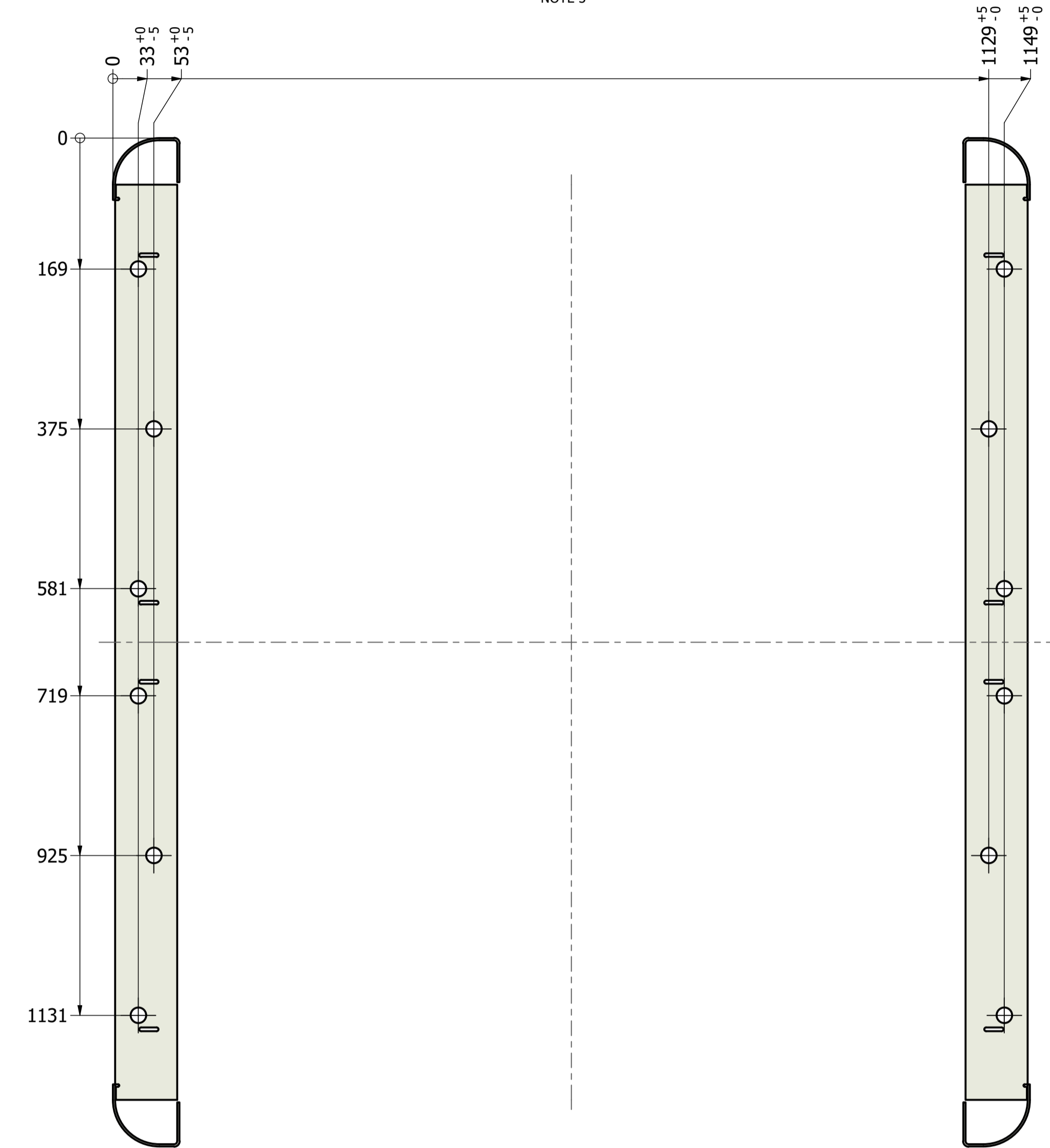


MIR EU PALLET RACK INSTALLATION



A-A FLOOR HOLE LAYOUT

HOLE TOLERANCE ± 3 UNLESS OTHERWISE INDICATED
NOTE 3



NOTES

NOTE 1.
INSTALL INDOOR ON LEVELED SURFACE.
E. G. CONCRETE FLOOR

NOTE 2.
MAXIMUM PAYLOAD 1000KG.
MAXIMUM PALLET DEFLECTION
ALLOWED 8MM.

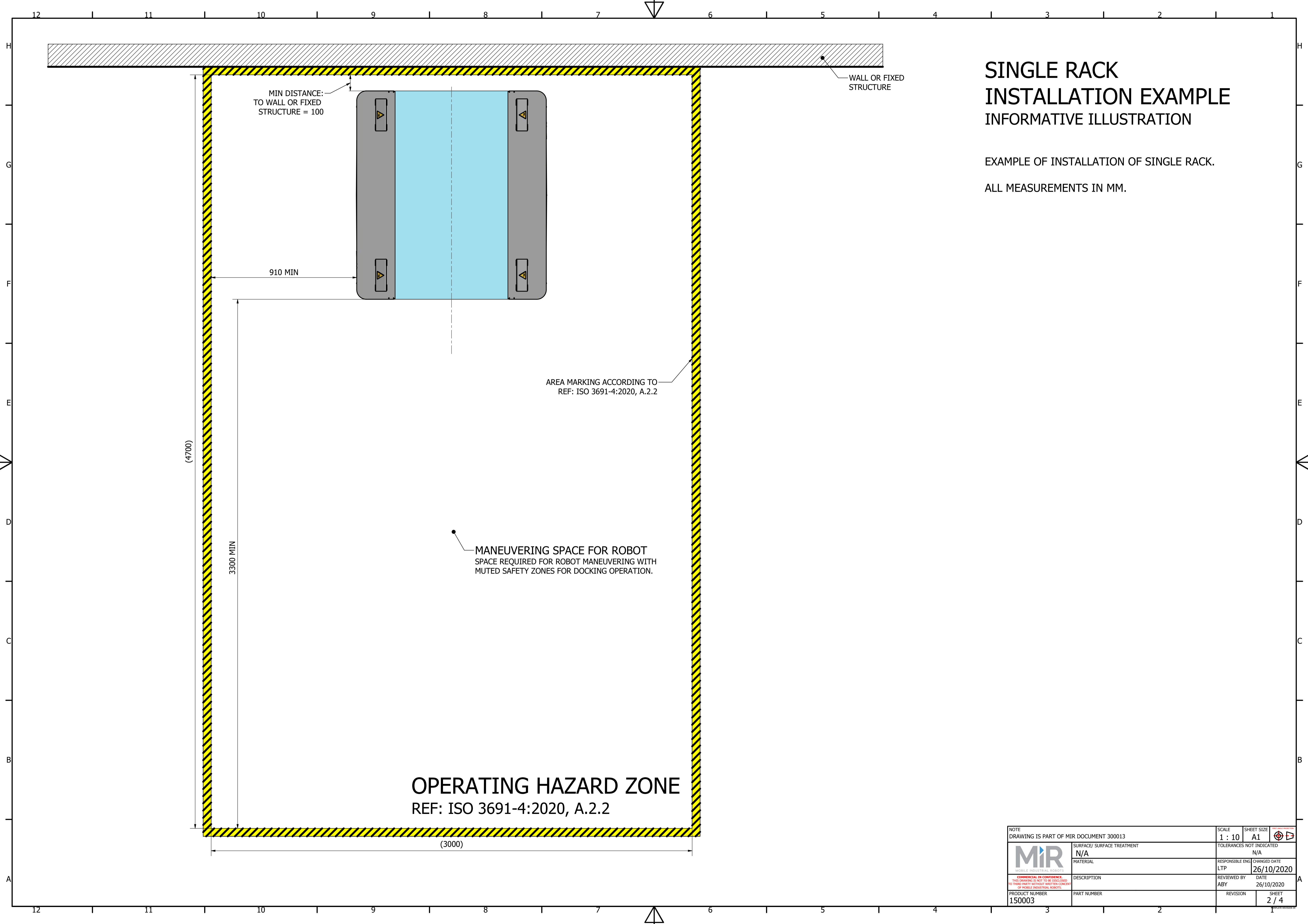
NOTE 3.
HOLE TOLERANCE IS FOR GUIDANCE
INSTALLATION TOLERANCE IS APPLICABLE
SCREWS TO MATCH FLOOR
E.G. CONCRETE FLOOR
M12 WEDGE ANCHOR
MIN 8KN TENSION REQUIRED

GENERAL NOTE
ALL MEASUREMENTS IN MM.

NOTE DRAWING IS PART OF MIR DOCUMENT 300013	SCALE 1 : 5	SHEET SIZE A1	TOLERANCES NOT INDICATED N/A
MIR MOBILE INDUSTRIAL ROBOTS	SURFACE/ SURFACE TREATMENT N/A	RESPONSIBLE ENG LTP	CHANGED DATE 26/10/2020
COMMERCIAL IN CONFIDENCE THIS DRAWING IS NOT TO BE DISCLOSED TO THIRD PARTY WITHOUT WRITTEN CONSENT OF MOBILE INDUSTRIAL ROBOTS.	DESCRIPTION MIR EU PALLET RACK INSTALLATION	REVIEWED BY ABY	DATE 26/10/2020
PRODUCT NUMBER 150003	PART NUMBER MAXI-PREU-100-INSTALLATION	REVISION A	SHEET 1 / 4

SINGLE RACK INSTALLATION EXAMPLE INFORMATIVE ILLUSTRATION

EXAMPLE OF INSTALLATION OF SINGLE RACK.
ALL MEASUREMENTS IN MM.



OPERATING HAZARD ZONE
REF: ISO 3691-4:2020, A.2.2

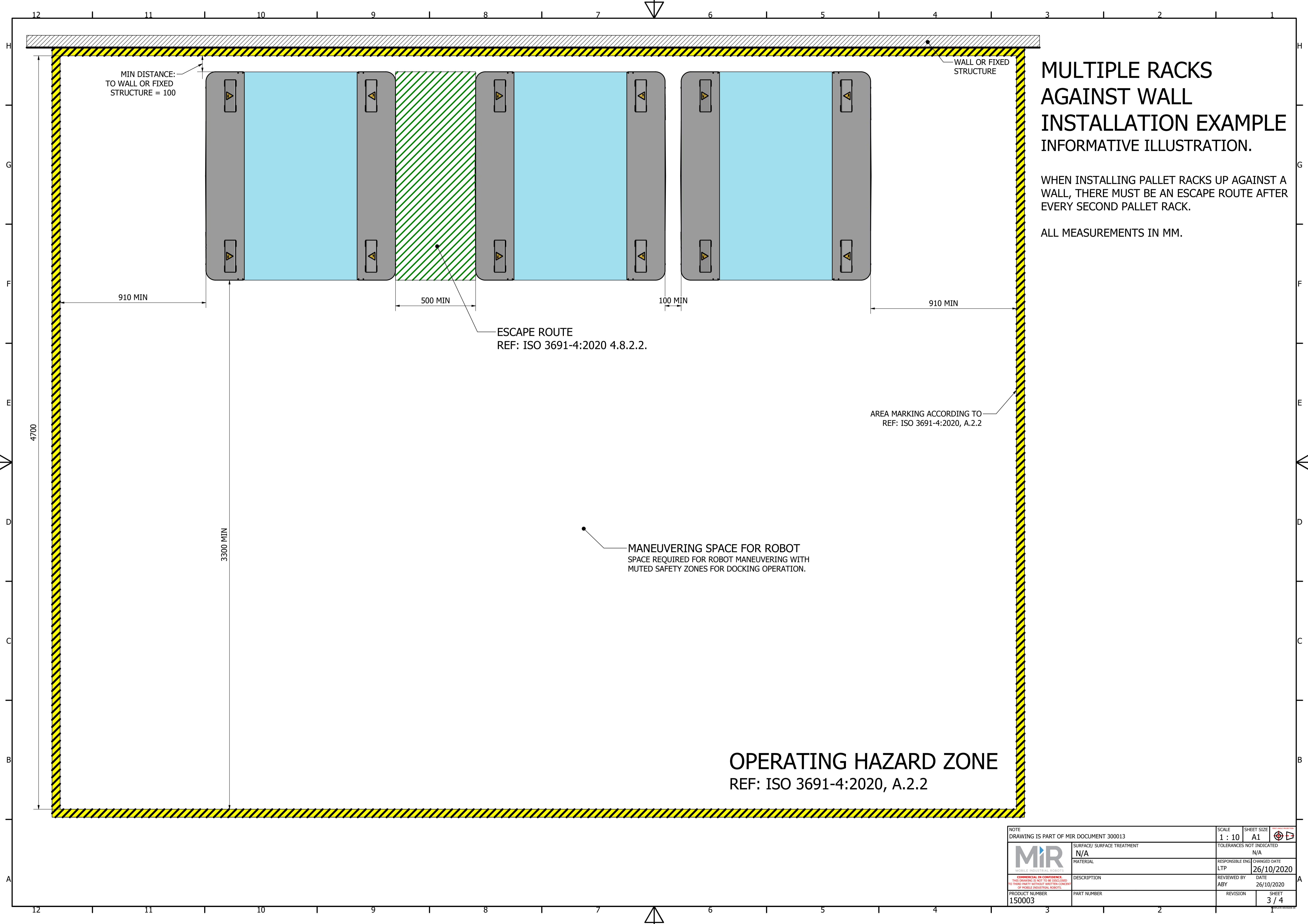
MANEUVERING SPACE FOR ROBOT
SPACE REQUIRED FOR ROBOT MANEUVERING WITH
MUTED SAFETY ZONES FOR DOCKING OPERATION.

AREA MARKING ACCORDING TO
REF: ISO 3691-4:2020, A.2.2

MIN DISTANCE:
TO WALL OR FIXED
STRUCTURE = 100

WALL OR FIXED
STRUCTURE

NOTE DRAWING IS PART OF MIR DOCUMENT 300013		SCALE 1 : 10	SHEET SIZE A1	
SURFACE/ SURFACE TREATMENT N/A		TOLERANCES NOT INDICATED N/A		
MATERIAL N/A		RESPONSIBLE ENG LTP	CHANGED DATE 26/10/2020	
DESCRIPTION <small>COMMERCIAL IN CONFIDENCE THIS DRAWING IS NOT TO BE DISCLOSED TO THIRD PARTY WITHOUT WRITTEN CONSENT OF MOBILE INDUSTRIAL ROBOTS.</small>		REVIEWED BY ABY	DATE 26/10/2020	
PRODUCT NUMBER 150003	PART NUMBER	REVISION	SHEET 2 / 4	




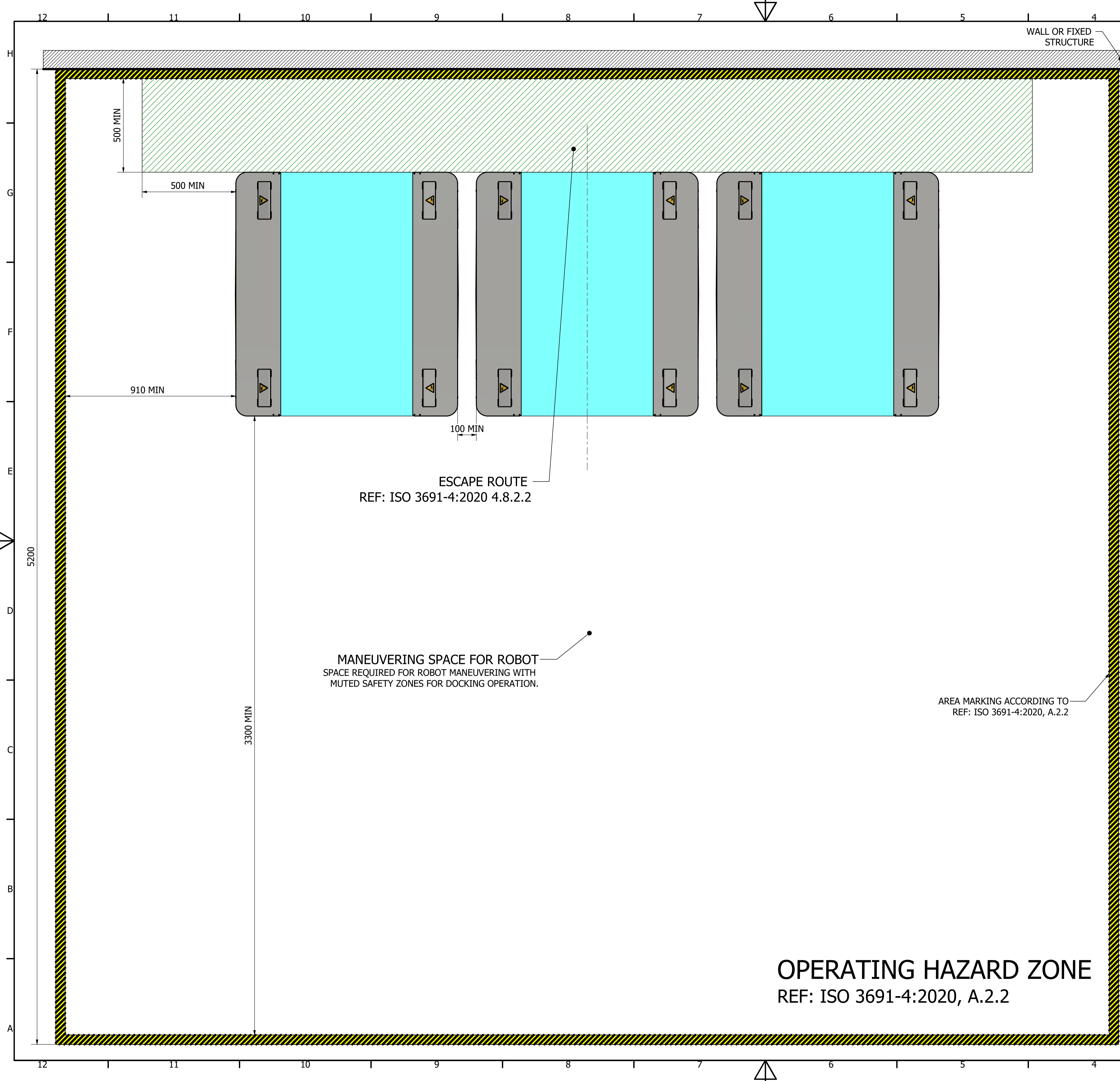
MULTIPLE RACKS AGAINST WALL INSTALLATION EXAMPLE INFORMATIVE ILLUSTRATION.

WHEN INSTALLING PALLET RACKS UP AGAINST A WALL, THERE MUST BE AN ESCAPE ROUTE AFTER EVERY SECOND PALLET RACK.

ALL MEASUREMENTS IN MM.

OPERATING HAZARD ZONE
REF: ISO 3691-4:2020, A.2.2

NOTE DRAWING IS PART OF MIR DOCUMENT 300013		SCALE 1 : 10	SHEET SIZE A1	TOLERANCES NOT INDICATED N/A
 <small>MOBILE INDUSTRIAL ROBOTS</small>		<small>RESPONSIBLE ENG</small> LTP		
<small>COMMERCIAL IN CONFIDENCE</small> <small>THIS DRAWING IS NOT TO BE DISCLOSED TO THIRD PARTY WITHOUT WRITTEN CONSENT OF MOBILE INDUSTRIAL ROBOTS.</small>		<small>CHANGED DATE</small> 26/10/2020		
<small>PRODUCT NUMBER</small> 150003		<small>REVIEWED BY</small> ABY		
<small>PART NUMBER</small>		<small>DATE</small> 26/10/2020		
<small>REVISION</small>		<small>SHEET</small> 3 / 4		



MULTIPLE RACKS CLOSE INSTALLATION EXAMPLE

INFORMATIVE ILLUSTRATION.

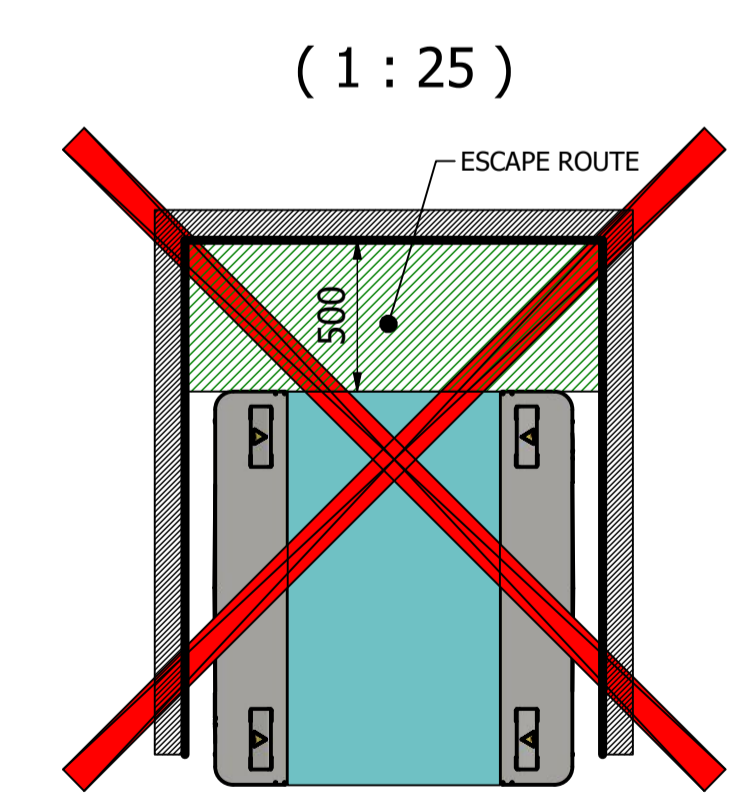
IF A NUMBER OF PALLET RACKS ARE MOUNTED CLOSE TO EACH OTHER AN ESCAPE ROUTE MUST BE AVAILABLE ON THE BACKSIDE OF THE RACKS.

ALL MEASUREMENTS IN MM.

ESCAPE ROUTE
REF: ISO 3691-4:2020 4.8.2.2


MANEUVERING SPACE FOR ROBOT
SPACE REQUIRED FOR ROBOT MANEUVERING WITH MUTED SAFETY ZONES FOR DOCKING OPERATION.

AREA MARKING ACCORDING TO
REF: ISO 3691-4:2020, A.2.2



ESCAPE ROUTES MUST HAVE FREE ACCESS.
DO NOT PLACE RACKS IN ENCLOSED AREAS.

OPERATING HAZARD ZONE
REF: ISO 3691-4:2020, A.2.2

NOTE DRAWING IS PART OF MIR DOCUMENT 300013		SCALE 1 : 10	SHEET SIZE A1	TOLERANCES NOT INDICATED N/A
 <small>MOBILE INDUSTRIAL ROBOTS</small> <small>COMMERCIAL IN CONFIDENCE. THIS DRAWING IS NOT TO BE DISCLOSED TO THIRD PARTY WITHOUT WRITTEN CONSENT OF MOBILE INDUSTRIAL ROBOTS.</small>		RESPONSIBLE ENG LTP		CHANGED DATE 26/10/2020
PRODUCT NUMBER 150003		DESCRIPTION		REVIEWED BY ABY
PART NUMBER		DATE 26/10/2020		REVISION 4 / 4