

Designated use

Collaborative mobile robot for internal transportation of heavy loads and pallets within the industry and logistics

Dimensions

Length	1350 mm
Width	920 mm
Height	320 mm
Weight (without load)	250 kg
Load surface	1300 x 900 mm

Color

Ral 7011 Iron Grey

Payload

Robot Payload 500 kg

Speed and performance

Battery run time	8 hours
Maximum speed	1.2 - 2.0 m/sec*
Ramps and inclines	5% incline of 10 meter with 0.5m/s

Power

Battery	Li-NMC, 48 V, 40 Ah
Charging time	1 hour
Battery charging cycle	Minimum 600 cycles
External Charger - Cable or Dock	Input: 100-230 V ac, 50-60 Hz / Output: 48 V, max 40 A

Environment

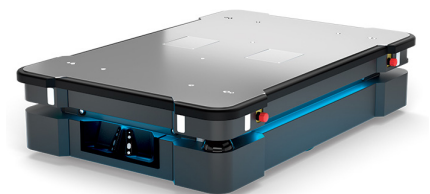
Ambient temperature range	+5°C to 40°C (humidity 10-95% non-condensing)
Certifications	Complies with ISO/EN 13849 EMC requirement for light industrial use and industrial use

Communication

WiFi	Dual-band wireless AC/G/N/B
I/Os	One Ethernet connection with Modbus protocol, Power: 3 x 24 V output 4 inputs, 4 outputs (IEC61131-2) Safety I/O (8 inputs, 4 outputs)

Sensors

SICK microScan3 safety system (2 pcs.)	360° visual protection around robot
3D camera (2 pcs.)	Detection of objects ahead: 30-3,500 mm above floor



* 2,0 m/sec speed upgrade kit available from 01.01.2019

